



Where  
Life  
Blooms..



PRATEEK  
**Grand Begonia**  
PREMIUM RESIDENCES

Where  
**Life blooms**



# Index



Architecture	04
Amenities	08
Outdoors Facilities	09
Clubhouse	10
Athletic Arena	11
EV Charge	12
Safety and Security	13
Urban Features	15
Blissful Township	16
Master Layout	19
Unit & Cluster Plans	27
Specifications	42
Me Time (Connectivity)	47
Location Map	48
Prateek Group at a Glance	49
Delivered Projects	50



GO DIRECTLY TO ANY PAGE  
BY CLICKING ON NUMBER



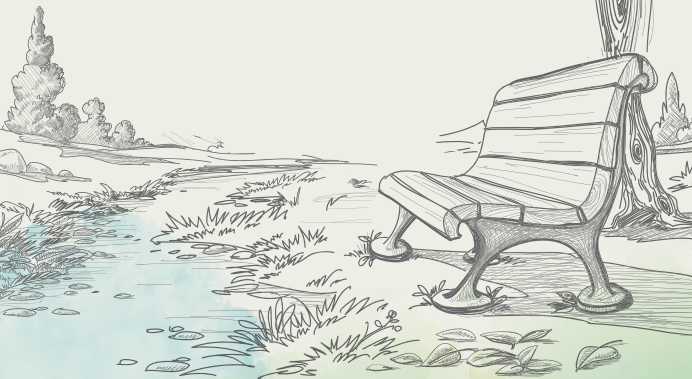


# Vision about to be delivered

---

This is where your imagination  
transforms into reality

---





Love  
strikes <sup>♡</sup>  
<sup>♡</sup> only  
once.  
Who said so ?





# Flourish in the captivating features

Prateek Grand Begonia is truly a perfect blend of elegance and functionality.

Grand arches and welcoming ambience.

The lobby height is grand, making the grand entrance



Images used are artistic impressions of the project. Actual project may vary.

# Discover <sup>the</sup> redefined living





# A bouquet of amenities abound



Classical Architecture



Grand Roof Parterre Garden



Grand Galleria



Golf Cart Facility






Dwell in the  nectar of  nature




Images used are with permission of the project. Actual project may vary.



# Thrive

in the ENCHANTING

# CLUBHOUSE



*The joy of community living awaits you!*



Swimming Pool



Gymnasium



Multipurpose Hall  
With Party Lawn





# An array of athletic arena


## Indoor

 Chess


 Carrom

 Snooker/Billiards

## Outdoor

 Tennis court

 Box Cricket

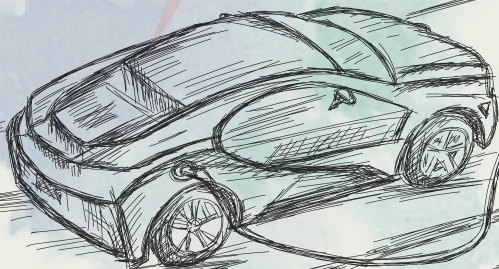
 Jogging track & more



Revolutionary  
project in  
**DELHI**  
**NCR**



**EV CHARGING POINTS  
WITH  
EVERY PARKING**





Images used are artistic impressions of the project. Actual project may vary.

Cocooned  
in the  
petals of  
Safety





Step Into a  
**Blooming**  
Wonderland  
of Joy

© 2014 The Home Depot. All rights reserved. The Home Depot is a registered trademark of The Home Depot.



In  
bloom  
amidst the  
urban  
orchard





# An odyssey of blissful blooms



Prateek Grand City - a 40-acre integrated township is the very epitome of purposeful living.

***It's a paradise that magical tales are made for!***

- Right on 75 Mtr. and 50 Mtr. road-connecting NH-58 and NH-24 -(NH-9) 16 lane expressway
- Proposed High Street Mall
- Two Commercial Shopping Centers
- Beautiful Landscapes & Hardscape
- Fast EV Charging Stations
- Proposed High-End International School





The Impression of the project Actual project



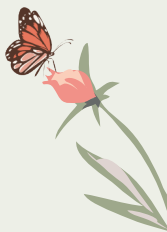
© 2013 Land and Air Conditioning of The Philippines. Actual project may vary.

COMMERCIAL / RESIDENTIAL

THE WOODS COMMERCIAL  
RESIDENTIAL PROJECT



# legends and master layout



# MASTER LAYOUT



*Legend*

UNITS	TOTAL AREA (Sq.ft)
2 BHK ELITE	1075
2 BHK ELITE (A) TOWER B11 - UNIT 08	1075
2 BHK DELUXE	1280
3 BHK DELUXE	1500
3 BHK PREMIUM	1810
3 BHK LUXURY	2200

- Police Station
- Education Facility School Plot (A)
- Reserve Plot (B) For Primary School
- Medical Facility Plot (A)
- Medical Reserve Plot (B)
- Commercial Plot (CP-01)



### PRATEEK BEGONIA ENTRANCE

- ENTRANCE EAST – GRAND BEGONIA (1)
- GRAND WATER FOUNTAIN (3)
- GRAND GALLERIA (12)
- ENTRANCE WEST – GRAND BEGONIA (15)

### CLUB HOUSE & AMENITIES ZONE

- GRAND BEGONIA CLUB (6)
- GRAND BEGONIA PARTY LAWN (5)
- GRAND ROOF PARTERRE GARDEN (7)
- READING ROOM
- YOGA
- ZUMBA & AEROBICS

### GREEN ZONE

- LIVELY PATHWAYS
- TROPICAL GARDEN (2)
- GRAND BEGONIA SUNKEN GARDEN/AMPHITHEATER (13)
- PLEASANT LAWN
- CASCADE WATER FEATURE (14)
- EASEFUL SIT OUT COURTS
- GRAND BEGONIA PLAY PARK (9)
- GRAND BEGONIA LIVING GARDEN (10)

### SPORTS ZONE

- BOX CRICKET (8)
- LAWN TENNIS COURT (11)
- JOGGING TRACK
- SQUASH COURT
- CHESS
- CARROM & MORE



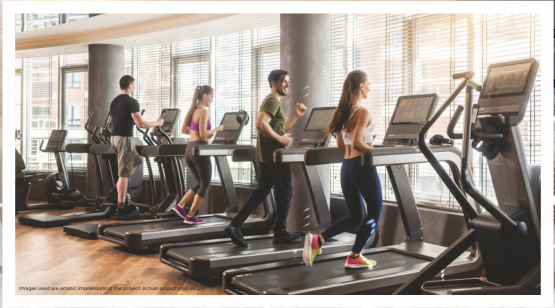
APARTMENT TYPE	CARPET AREA (sq ft)	BUILT UP AREA (sq ft)	BALCONY AREA (sq ft)	EXTERNAL WALL AREA (sq ft)	TOTAL AREA (sq ft)
2 BHK (ELITE) (1075)	626.57	839.16	148.76	63.83	1075.00
2 BHK (ELITE A) POWER (1075)	630.88	840.67	144.45	65.34	1075.00
2 BHK (DELUXE) (1280)	786.74	1001.70	145.53	69.43	1280.00
3 BHK (DELUXE) (1500)	914.29	1165.95	165.98	85.68	1500.00
3 BHK (PREMIUM) (1810)	1099.22	1414.82	230.67	84.93	1810.00
3 BHK (LUXURY) (2200)	1312.45	1712.44	290.63	109.36	2200.00

\*Note :- 1 sq m. = 10.764 sq ft.



Embrace the  
Essence of  
Grandeur





Images used are artistic impressions of the project. Actual project may vary.





Images used are artistic impressions of the project.  
Actual project may vary.



Images used are artistic impressions of the project. Actual project may vary.



Images used are artistic impressions of the project. Actual project may vary.



Images used are artistic impressions of the project.  
Actual project may vary.



Images used are artistic impressions of the project.  
Actual project may vary.



# unit and cluster plan





# UNIT PLAN

## 2 BHK (ELITE)

Carpet Area	626.57 sq. ft.
Built-up Area	839.16 sq. ft.
Balcony Area	148.76 sq. ft.
External Wall Area	63.83 sq. ft.
<b>Total Area</b>	<b>1075.00 sq. ft.</b>

- 2 Bedrooms
- 2 Toilets
- Living/Dining
- Kitchen with Dry Balcony
- Balconies



# UNIT PLAN

## 2 BHK (ELITE A) TOWER B11 UNIT 08

Carpet Area	630.88 sq. ft.
Built-up Area	840.67 sq. ft.
Balcony Area	144.45 sq. ft.
External Wall Area	65.34 sq. ft.
<b>Total Area</b>	<b>1075.00 sq. ft.</b>

- 2 Bedrooms
- 2 Toilets
- Living/Dining
- Kitchen with Dry Balcony
- Balconies



# UNIT PLAN

## 2 BHK (DELUXE)

Carpet Area	786.74 sq. ft.	- 2 Bedrooms
Built-up Area	1001.70 sq. ft.	- 2 Toilets
Balcony Area	145.53 sq. ft.	- Study
External Wall Area	69.43 sq. ft.	- Living/Dining Room
<b>Total Area</b>	<b>1280.00 sq. ft.</b>	- Kitchen with Dry Balcony
		- Balconies



# UNIT PLAN

## 3 BHK (DELUXE)

Carpet Area	914.29 sq. ft.
Built-up Area	1165.95 sq. ft.
Balcony Area	165.98 sq. ft.
External Wall Area	85.68 sq. ft.
<b>Total Area</b>	<b>1500.00 sq. ft.</b>

- 3 Bedrooms
- 2 Toilets
- Living/Dining
- Kitchen with Dry Balcony
- Balconies





# UNIT PLAN

## 2 BHK (DELUXE)

Carpet Area	786.74 sq. ft.
Built-up Area	1001.70 sq. ft.
Balcony Area	145.53 sq. ft.
External Wall Area	69.43 sq. ft.
<b>Total Area</b>	<b>1280.00 sq. ft.</b>

- 2 Bedrooms
- 2 Toilets
- Study
- Living/Dining
- Kitchen with Dry Balcony
- Balconies



# UNIT PLAN

## 3 BHK (PREMIUM) IMPERIAL TOWERS

Carpet Area	1099.22 sq. ft.
Built-up Area	1414.82 sq. ft.
Balcony Area	230.67 sq. ft.
External Wall Area	84.93 sq. ft.
<b>Total Area</b>	<b>1810.00 sq. ft.</b>

- 3 Bedrooms
- 3 Toilets
- Living
- Family Lounge
- Kitchen with Dry Balcony
- Balconies





# UNIT PLAN

## 3 BHK (LUXURY) IMPERIAL TOWERS

Carpet Area	1312.45 sq. ft.
Built-up Area	1712.44 sq. ft.
Balcony Area	290.63 sq. ft.
External Wall Area	109.36 sq. ft.
<b>Total Area</b>	<b>2200.00 sq. ft.</b>

- 3 Bedrooms
- 4 Toilets
- 1 Dress
- Study/Servant Room
- Living
- Family Lounge
- Kitchen with Dry Balcony
- Balconies

# TOWER B-1



(1st to 29th Floor)  
CLUSTER PLAN

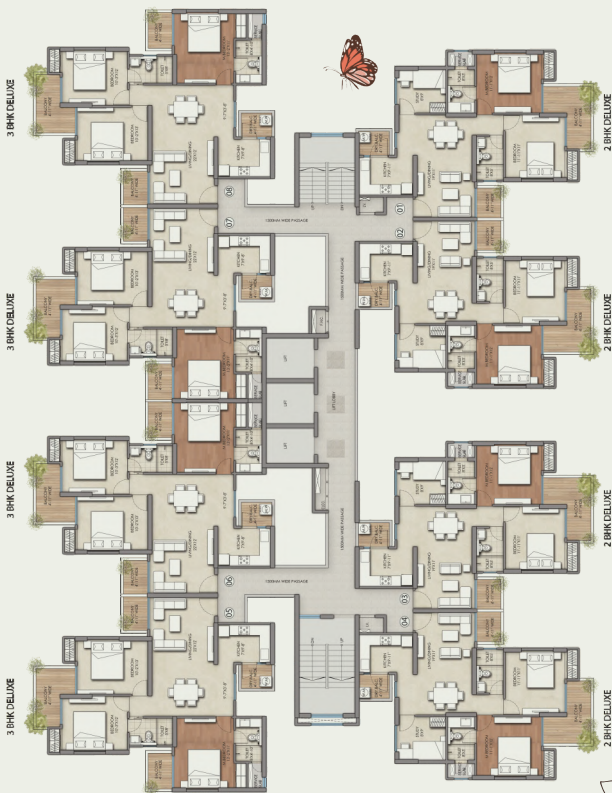
# TOWER B-2



(1st to 32nd Floor)  
CLUSTER PLAN



# TOWER B-3 & B-6



(1st to 29th Floor)  
CLUSTER PLAN

# TOWER B-4



(1st to 29th Floor)  
CLUSTER PLAN





# IMPERIAL TOWERS

## TOWER BI-7, BI-8, BI-9 & BI- 10

3 BHK LUXURY

3 BHK LUXURY



3 BHK PREMIUM

3 BHK PREMIUM

(1st to 32nd Floor)  
CLUSTER PLAN

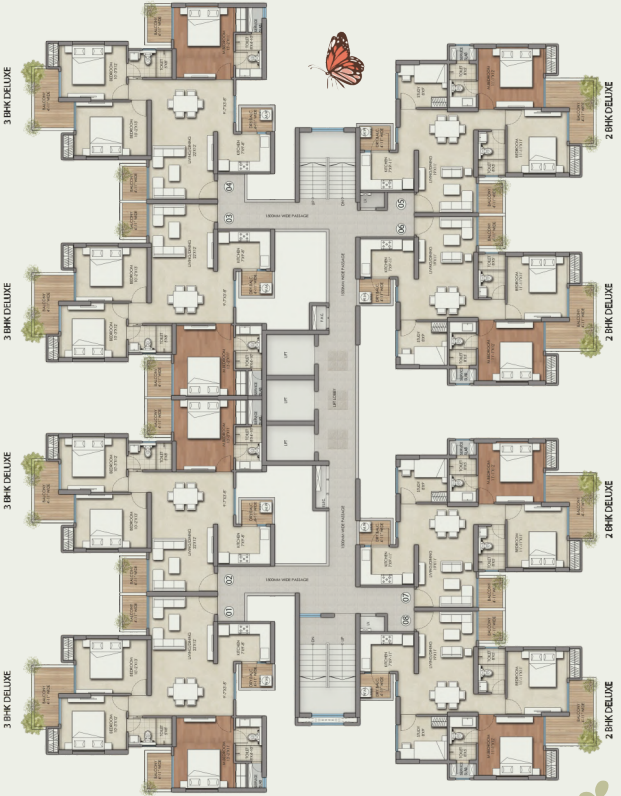


# TOWER B-11



(1st to 32nd Floor)  
CLUSTER PLAN

# TOWER B-12



(1st to 28th Floor)  
CLUSTER PLAN



# SPECIFICATIONS



## LIVING/DINING

<b>Walls</b>	POP Punning work & Oil Bound Distemper
<b>Floor</b>	High End Vitrified Tiles
<b>Ceiling</b>	POP Punning work & Oil Bound Distemper
<b>Doors</b>	Designer Entry Door of 8' Height
<b>Windows</b>	Powder coated Aluminium/UPVC Windows
<b>Electrical Fixtures &amp; Fittings</b>	Modular Electric Switches



## MASTER BEDROOM

<b>Walls</b>	POP Punning work & Oil Bound Distemper
<b>Floor</b>	Laminated Wooden Flooring
<b>Ceiling</b>	POP Punning work & Oil Bound Distemper
<b>Doors</b>	Skin moulded paneled door/laminated flush door
<b>Windows</b>	Powder coated Aluminium/UPVC Windows
<b>Electrical Fixtures &amp; Fittings</b>	Modular Electric Switches





## BEDROOMS

<b>Walls</b>	POP Punning work & Oil Bound Distemper
<b>Floor</b>	High End Vitrified Tiles
<b>Ceiling</b>	POP Punning work & Oil Bound Distemper
<b>Doors</b>	Skin moulded paneled door/laminated flush door
<b>Windows</b>	Powder coated Aluminium/UPVC Windows
<b>Electrical Fixtures &amp; Fittings</b>	Modular Electric Switches



## TOILETS

<b>Walls</b>	Ceramic Tiles cladged upto 7ft height
<b>Floor</b>	Anti Skid Ceramic tiles
<b>Ceiling</b>	POP Punning work & Oil Bound Distemper
<b>Doors</b>	Skin moulded paneled door/laminated flush door
<b>Windows</b>	Powder coated Aluminium/UPVC Windows
<b>Sanitary Fixtures &amp; Fittings</b>	Branded Wall hung W.C, Counter Top Wash Basin, CP Fittings
<b>Electrical Fixtures &amp; Fittings</b>	Modular Electric Switches





## KITCHEN

<b>Walls</b>	Ceramic Tiles cladded upto 2ft height, above Granite Counter/Marble Counter
<b>Floor</b>	High End Vitrified Tiles
<b>Ceiling</b>	POP Punning work & Oil Bound Distemper
<b>Windows</b>	Powder coated Aluminium/UPVC Windows
<b>Sanitary Fixtures &amp; Fittings</b>	Branded CP Fittings with Single Bowl Stainless Steel Sink.
<b>Electrical Fixtures &amp; Fittings</b>	Modular Electric Switches



## BALCONIES

<b>Walls</b>	External Weather Proof Paint
<b>Floor</b>	Anti Skid Ceramic tiles
<b>Doors</b>	Powder coated Aluminium/UPVC Doors
<b>Electrical Fixtures &amp; Fittings</b>	Modular Electric Switches





## STUDY

<b>Walls</b>	POP Punning work & Oil Bound Distemper
<b>Floor</b>	High End Vitrified Tiles
<b>Ceiling</b>	POP Punning work & Oil Bound Distemper
<b>Doors</b>	Skin moulded paneled door/laminated flush door
<b>Windows</b>	Powder coated Aluminium/UPVC Windows
<b>Electrical Fixtures &amp; Fittings</b>	Modular Electric Switches



Notes: The colour and design of the tiles can be changed without any prior notice • Variation in the colour and size of vitrified tiles/granite may occur • Variation in the colour of lamination may occur • Area in all categories of apartments may vary up to  $\pm 3\%$  without any change in cost, however, in case the variation is beyond  $\pm 3\%$ , charges are applicable.



---

Embrace a magnificent lifestyle that flourishes in a “World-Class Township”

---



# Connect to every Beads of life

Place Where "Me Time" is connected with Peace , Security,  
Convenient Travel Time & Unbridled True Love.



40  
MIN  
drive

IGI Airport

25  
MIN  
drive

Nehru Place  
IT Product Hub

25  
MIN  
drive

South Delhi  
Commercial Hub

20  
MIN  
drive

India Gate

10  
MIN  
drive

Akshardham

2  
MIN  
drive

Namo Bharat  
Rail Service to  
Jewar Airport

2  
MIN  
drive

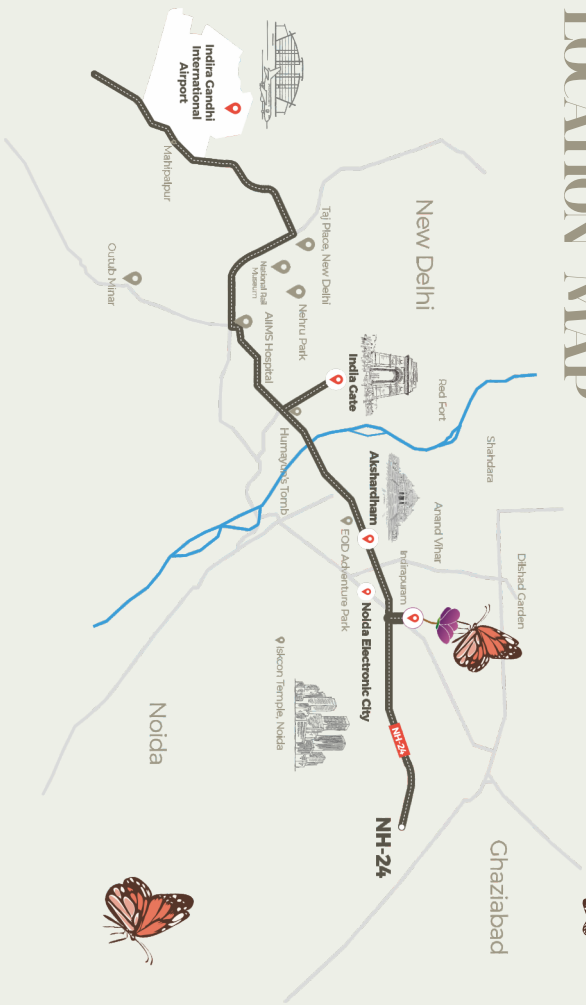
RRTS Station

2  
MIN  
drive

Metro  
Station



# LOCATION-MAP





## Where foundations are kept on commitment...

**Prateek Group at a glance** \_\_\_\_\_ 

At Prateek, our commitment is our concrete. As we don't just create homes, we turn your dreams into a reality. Firmly guided by our core values of integrity, initiative and involvement, we have always tried to thread the path of excellence to deliver one supreme project after another, timely as promised. That's what makes us one of the most trusted and admired real estate groups in the region.

Our vision is to develop iconic infrastructural entities that redefine the industry standards while elevating the environs of our projects, transforming them into high-flying prime landmarks all over NCR.





...and a promise is more than a bond.

DELIVERED PROJECTS

RESIDENTIAL



COMMERCIAL



READY TO MOVE IN



AT



ON GOING PROJECT



ENTERTAINMENT VENTURE



CSR INITIATIVE





# Prateek Group

Creating Landmarks, Setting Benchmarks



Click & Follow the Butterfly to our Social Platforms

**Sales Gallery:** Prateek Grand City, Siddharth Vihar, NH-9 (NH-24), Ghaziabad.

**Corp./Regd. Office:** Prateek PRO-MENAGE, A-42, Sector - 67, Noida 201301

**Ph: 8578-8578-22 | Tel: +91 120 -6788300**

E-mail: [prateekgrandbegonia@prateekgroup.com](mailto:prateekgrandbegonia@prateekgroup.com) | Website: [www.prateekgroup.com](http://www.prateekgroup.com)

RERA No : UPRERAPRJ790651 | RERA No : UPRERAPRJ865272

<https://up-rera.in/Projects>

